

# VISIONMASTER FT

Integrated Platform Management System (IPMS)



**Sperry Marine**

# VISIONMASTER FT Integrated Platform Management System (IPMS)

## Key Highlights

- Open-architecture dual redundant Ethernet ring topology
- Ruggedised dual redundant server platform
- Thin client / server design
- High-reliability proven industrial hardware and software for lower life-cycle costs
- Industry-standard remote I/O outstation hardware
- UMS (Unmanned Machinery Space) operation
- Optional solid-state flash memory capability
- Integrated CCTV capability option
- Stability & Safety Management options
- Scenario-based training option
- Fully Type Approved
- Integrates seamlessly with VisionMaster FT integrated bridge system

## Proven Expertise

The VisionMaster FT Integrated Platform Management System (IPMS) is a new-generation alarm, monitoring and control system designed specifically for the requirements of modern commercial and military ships. It is based on Northrop Grumman Sperry Marine's extensive experience in designing, developing, installing and supporting integrated ship control and monitoring systems. Sperry Marine is the supplier of the Platform Management System for the Royal Navy's Type 45 program, and has deployed over 750 shipboard monitoring, alarm and control systems for commercial vessels worldwide.

The IPMS system provides a fully integrated, scalable control and monitoring package offering complex functionality in a highly instinctive format allowing reduced operator load and manning levels.

The IPMS is a member of the VisionMaster FT family of navigation and ship control solutions, and is designed to be fully integrated into VisionMaster FT TotalWatch multi-function workstations.

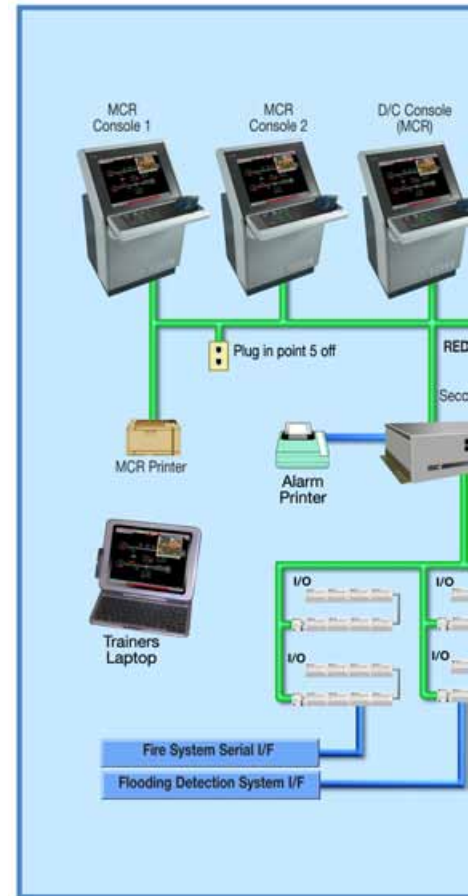
The VisionMaster FT IPMS is supported by a dedicated team of Sperry Marine engineers and backed by the industry's most extensive worldwide network of factory-trained service technicians.

## Scalable Family of Solutions

The IPMS provides a range of turnkey solutions suitable for vessels of any size and type, encompassing all aspects of platform management:

- Machinery alarm monitoring and control
- Auxiliary systems alarm monitoring and control
- Safety management
- Condition-based monitoring (GBM)
- CCTV
  - Secure remote access
  - Managed through life support (ILS package)

The system's scalable architecture is designed



to meet the full range of shipboard requirements, from simple to complex environments. It permits easy field upgrades to add functionality.

## Redundant Ring Network Architecture

The VisionMaster FT IPMS is based on a dedicated redundant switched Ethernet local area network for complete field-to-server data links. The Ethernet ring is structured around dual redundant servers in hot back up configuration for decentralized control and monitoring of all subsystems.

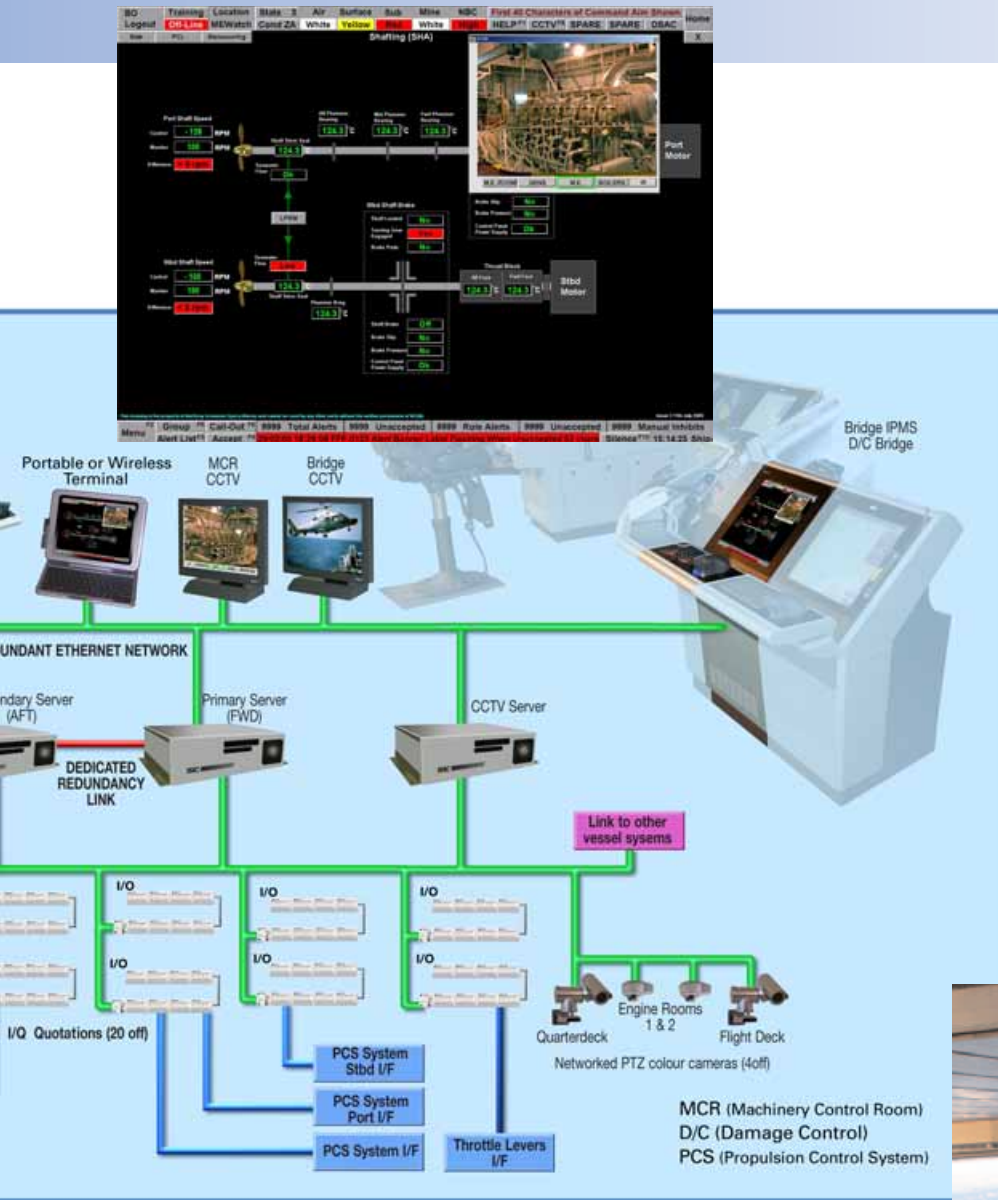


## CCTV

The system is designed to support flexible CCTV and IR sensor capability. CCTV and IR images can be displayed in pop-up windows as desired. This functionality integrates into the same network and screens with optional pan, tilt and zoom.

## Dependable Hardware and Software

The extensive use of industrial hardware and software for all critical components ensures reduced life-cycle costs for customers. The scalable network is open-ended for easy upgrade to accommodate future requirements without extensive cabling or additional hardware.

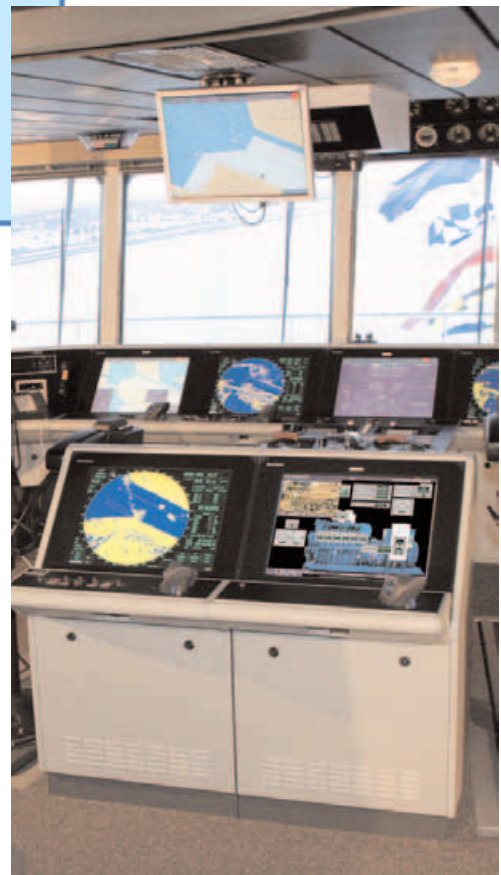


## Distributed I/O

Multiple I/O outstations are located around the vessel adjacent to the systems they are monitoring to minimise cabling requirements. The distributed I/O outstations utilise industrial-grade hardware. Fast Ethernet switches in the outstations are connected onto the redundant ring, which links to both the primary and secondary server units.

## Workstations

The IPMS network permits multiple workstations and computers to be connected to the network ring. The standard ruggedised workstation utilises proven thin-client technology. When maximum reliability is desired, solid-state flash memory can be used instead of rotating hard drives. The IPMS can be integrated with other VisionMaster FT systems for display and control from a TotalWatch multi-function workstation on the bridge.



## Sperry Marine

[www.sperrymarine.northropgrumman.com](http://www.sperrymarine.northropgrumman.com)

For more information, please contact:

### AMERICAS

#### Charlottesville, VA USA

Tel: +1 434-974-2000

Fax: +1 434-974-2259

#### Melville, NY USA

Tel: +1 631-719-4736

Fax: +1 631-719-4630

### ASIA

#### China, Shanghai

Tel: +86-21-5836-9978

Fax: +86-21-5836-9979

#### Hong Kong, Sheung Wan

Tel: +852-2581-9122

Fax: +852-2581-9967

#### Japan, Tokyo

Ph: +81 (0)-3-3863-7401

Fax: +81 (0)-3-3863-7455

#### Singapore

Tel: +65-6274-3332

Fax: +65-6271-3339

#### South Korea, Busan

Tel: +82-51-247-7455

Fax: +82-51-247-7454

#### Taiwan, Kaohsiung

Tel: +886-7-331-7786

Fax: +886-7-331-7924

### CANADA

#### Nova Scotia, Halifax

Tel: +1 902-468-9479

Fax: +1 902-468-9480

### EUROPE

#### Belgium, Antwerp

Tel: +32-3-233-14-33

Fax: +32-3-225-05-53

#### Denmark, Copenhagen

Tel: +45-77-33-66-33

Fax: +45-77-33-66-11

#### Germany, Hamburg

Tel: +49 (0)40 299 00-0

Fax: +49 (0)40 299 00-146

#### Holland, Vlaardingen

Tel: +31(0)-10-4451600

Fax: +31(0)-10-4345015

#### Norway, Bergen

Tel: +47-55-94-94-94

Fax: +47-55-34-52-27

#### United Kingdom, New Malden

Tel: +44(0)20 8329 2000

Fax: +44(0)20 8329 2415

## Worldwide Service

Sperry Marine, founded in 1910, is the world leader in developing, manufacturing, supplying and supporting marine electronics equipment and systems. We have 34 facilities in 11 countries and a worldwide network of over 200 distributors. Sperry Marine has a service location in every major seaport. You are never far from a factory-trained service engineer.



## Centralized Dispatching Centers

### North & South America

24-Hour Service:

Phone: +1 504 371 8365

Fax: +1 504 371 8368

Spares & Repairs:

Phone: +1 504 328 9171

Fax: +1 504 328 9855

### Europe & Middle East

Service (United Kingdom):

Phone: +44 (0) 208 329 2401/2

After Hours: +44 (0) 208 329 2400

Fax: +44 (0) 208 329 2458

Spares & Repairs (Netherlands):

Phone: +31 (0) 10 445 1666

Fax: +31 (0) 10 434 6102

### Asia

24-Hour Service (Singapore):

Phone: (65) 274 3332

Fax: (65) 271 3339

Spares & Repairs (Singapore):

Phone: (65) 274 3332

Fax: (65) 271 3339

## At Your Service Around The World

### Service Highlights:

- Worldwide 24/7 service
- 24 hour Hotline
- Computerized Customer Support
- Operator Crew and Technical Training
- Service Management Agreements/Contracts
- Electronic Documentation
- Computer-Based Training
- ISO 9002 Certified Offices
- Consultation for Special Projects
- Shoreside Repair Centers
- Parts Exchange Service
- GMDSS Shore-Based Maintenance Agreements

Sperry Marine, with worldwide headquarters in Charlottesville, VA, and major engineering and support offices in Melville, NY, New Malden, England, and Hamburg, Germany, is part of the Northrop Grumman **Electronic Systems** sector.

This brochure, including the information contained herein, is the Intellectual Property of Northrop Grumman Corporation and as such may not be copied or reproduced without the written permission of Northrop Grumman. All specifications herein were in effect on the date of this publication. However, any technical data should not be solely relied upon and should be verified at time of order. Furthermore, equipment may vary from that specified due to the Sperry Marine policy of continual product improvement.